



**ALL INFORMATION MUST BE COMPLETED AS SPECIFIED**

**PLEASE SELECT ONE:**

**1) STANDARD HEM (8-10 INCHES FROM FLOOR).**

**YES**, Standard hem.

**NO**, prefer \_\_\_\_\_ inches from floor.

**TO ENSURE PROPER FIT THE FOLLOWING INFORMATION MUST BE COMPLETE. FAILURE TO GIVE ALL INFORMATION, MAY DELAY YOUR ORDER.**

**1) HEIGHT** (Top of head to floor).

**2) CHEST**

**3) WEIGHT**

**ALL INFORMATION MUST BE COMPLETED OR IT MAY DELAY YOUR ORDER**

	SEX M / F	NAME	CHEST	HEIGHT (Top of Head to Floor) Feet & Inches	WEIGHT	PLEASE DO NOT WRITE IN THIS SPACE
1.				ft. in.		
2.				ft. in.		
3.				ft. in.		
4.				ft. in.		
5.				ft. in.		
6.				ft. in.		
7.				ft. in.		
8.				ft. in.		
9.				ft. in.		
10.				ft. in.		
11.				ft. in.		
12.				ft. in.		
13.				ft. in.		
14.				ft. in.		
15.				ft. in.		
16.				ft. in.		
17.				ft. in.		
18.				ft. in.		
19.				ft. in.		
20.				ft. in.		
21.				ft. in.		
22.				ft. in.		
23.				ft. in.		
24.				ft. in.		
25.				ft. in.		
26.				ft. in.		
27.				ft. in.		
28.				ft. in.		
29.				ft. in.		
30.				ft. in.		

**(CONTINUE ON NEXT PAGE — MAKE COPIES OF THIS FORM AS NEEDED)**

**EXTRAS** — We suggest ordering extra units to allow for future growth in your choir membership and to insure true color consistency. Simply mark these as “*EXTRAS*” and estimate the sizes needed.

Terms: A 25% deposit should accompany your order, payable by cash, money order, cashier’s check, MasterCard or Visa. **Balance due C.O.D.** is payable by cash, money order or cashier’s check. **For orders of \$300 or more, we pay all regular domestic postal or freight charges if full payment accompanies your order. Notice: For orders less than \$300, please add \$10 for shipping and handling.**

**ALL INFORMATION MUST BE COMPLETED AS SPECIFIED**

**PLEASE SELECT ONE:**

**1) STANDARD HEM (8-10 INCHES FROM FLOOR).**

**YES**, Standard hem.

**NO**, prefer \_\_\_\_\_ inches from floor.

**TO ENSURE PROPER FIT THE FOLLOWING INFORMATION MUST BE COMPLETE. FAILURE TO GIVE ALL INFORMATION, MAY DELAY YOUR ORDER.**

**1) HEIGHT** (Top of head to floor).

**2) CHEST**

**3) WEIGHT**

**ALL INFORMATION MUST BE COMPLETED OR IT MAY DELAY YOUR ORDER**

	SEX M / F	NAME	CHEST	HEIGHT (Top of Head to Floor) Feet & Inches	WEIGHT	PLEASE DO NOT WRITE IN THIS SPACE
31.				ft. in.		
32.				ft. in.		
33.				ft. in.		
34.				ft. in.		
35.				ft. in.		
36.				ft. in.		
37.				ft. in.		
38.				ft. in.		
39.				ft. in.		
40.				ft. in.		
41.				ft. in.		
42.				ft. in.		
43.				ft. in.		
44.				ft. in.		
45.				ft. in.		
46.				ft. in.		
47.				ft. in.		
48.				ft. in.		
49.				ft. in.		
50.				ft. in.		
51.				ft. in.		
52.				ft. in.		
53.				ft. in.		
54.				ft. in.		
55.				ft. in.		
56.				ft. in.		
57.				ft. in.		
58.				ft. in.		
59.				ft. in.		
60.				ft. in.		

**(CONTINUE ON NEXT PAGE — MAKE COPIES OF THIS FORM AS NEEDED)**

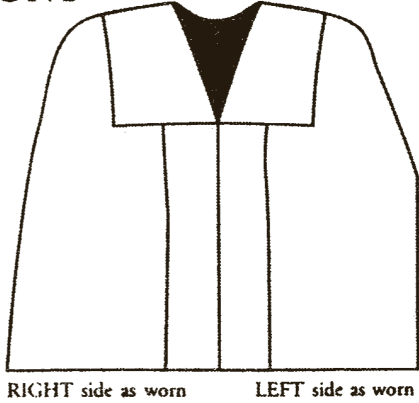
**EXTRAS** — We suggest ordering extra units to allow for future growth in your choir membership and to insure true color consistency. Simply mark these as "EXTRAS" and estimate the sizes needed.

Terms: A 25% deposit should accompany your order, payable by cash, money order, cashier's check, MasterCard or Visa. **Balance due C.O.D.** is payable by cash, money order or cashier's check. **For orders of \$300 or more, we pay all regular domestic postal or freight charges if full payment accompanies your order. Notice: For orders less than \$300, please add \$10 for shipping and handling.**

# MONOGRAM INSTRUCTIONS

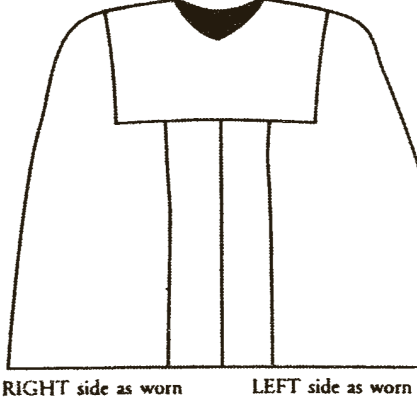
- Please Use *The Appropriate Drawing* to show placement of your monograms.
- Color of Monogram or Symbol \_\_\_\_\_
- Monogram (Please List Letters) \_\_\_\_\_

ROBE STYLE: \_\_\_\_\_  
FRONT



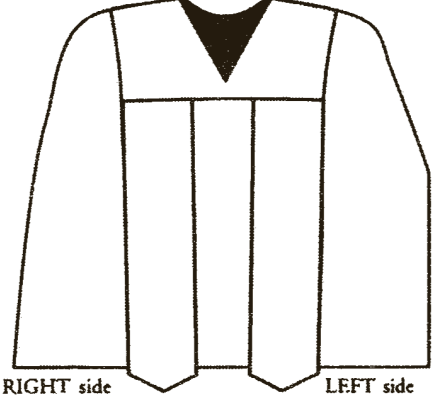
RIGHT side as worn      LEFT side as worn

ROBE STYLE: \_\_\_\_\_  
FRONT



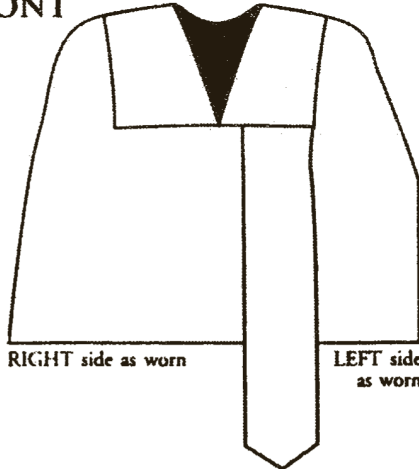
RIGHT side as worn      LEFT side as worn

ROBE STYLE: \_\_\_\_\_  
FRONT



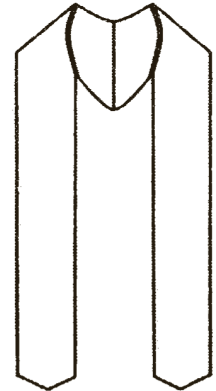
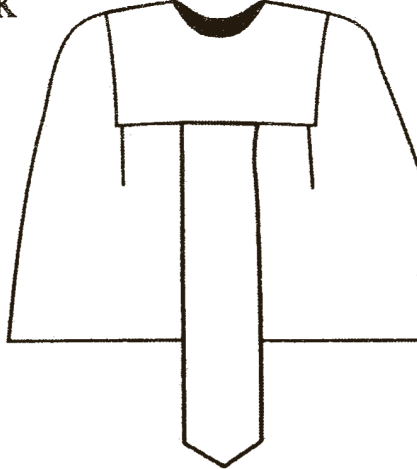
RIGHT side as worn      LEFT side as worn

ROBE STYLE: \_\_\_\_\_  
FRONT

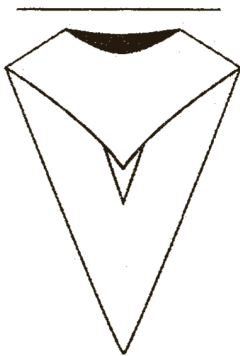


RIGHT side as worn      LEFT side as worn

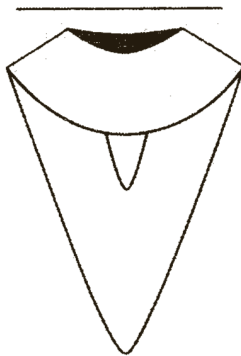
ROBE STYLE: \_\_\_\_\_  
BACK



STOLE STYLE: \_\_\_\_\_



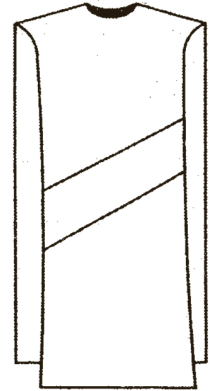
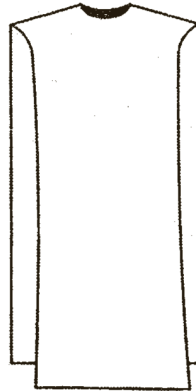
STOLE STYLE: \_\_\_\_\_



STOLE STYLE: \_\_\_\_\_



OVERLAY \_\_\_\_\_



*Please allow 6 - 8 weeks for completion of robes after ALL information is received correctly.*

Be sure to complete all information on the order form to assure prompt service.

**THANK YOU FOR CHOOSING REGENCY CAP & GOWN**